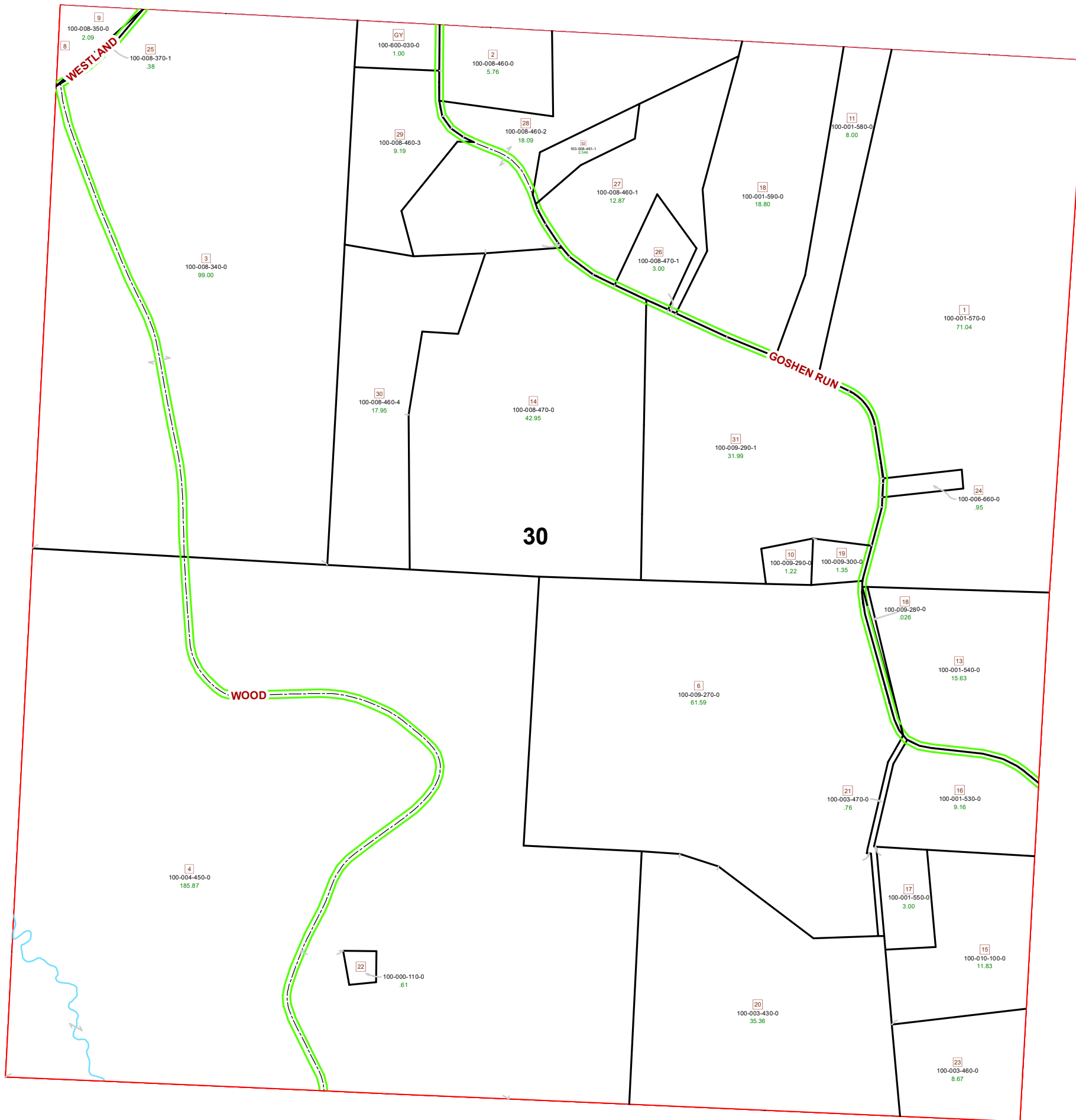
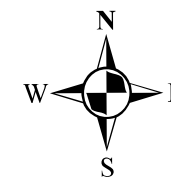


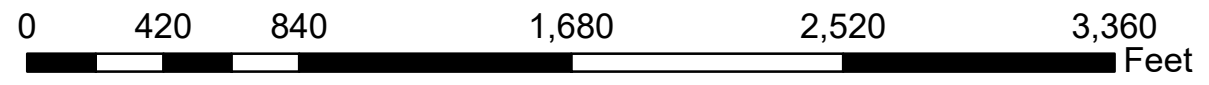
MARION TOWNSHIP SECTION 30 R12 TWP 8 MORGAN COUNTY, OH



PIN	Owner	VOL	PAGE	LegalDescr	Acres
100-600-030-0	CEMETERY (WESTLAND)			0	1
100-008-470-1	DEMSTER ROBERT T	OR170	289	R12 T08 S30 SD 26	3
100-008-460-1	DEMSTER ROBERT T	OR170	289	R12 T08 S30 SD 27	12.87
100-001-550-0	DOUGAN GLEN E TRUSTEE	OR202	1749	R12 T08 S30 SD 17	3
100-001-530-0	DOUGAN GLEN E TRUSTEE	OR202	1749	R12 T08 S30 SD 16	9.16
100-001-540-0	DOUGAN GLEN E TRUSTEE	OR202	1749	R12 T08 S30 SD 13	15.63
100-001-570-0	DOUGAN GLEN E TRUSTEE	OR202	1749	R12 T08 S30 SD 1	71.048
100-001-580-0	DOUGAN GLEN E TRUSTEE	OR202	1749	R12 T08 S30 SD 11	8
100-001-590-0	DOUGAN GLEN E TRUSTEE	OR202	1749	R12 T08 S30 SD 18	18.8
100-008-460-3	FUSSNER JACOB W	OR204	2444	R12 T08 S30 SD 29	9.195
100-008-370-1	FUSSNER JACOB W	OR110	380	R12 T08 S30 SD 25	0.382
100-008-350-0	FUSSNER JACOB W	OR110	380	R12 T80 S30 SD 8-9	2.09
100-000-110-0	GOSHEN RUN FARMS LLC	OR214	1287	R12 T08 S30 SD 22	0.618
100-004-450-0	GOSHEN RUN FARMS LLC	OR208	2834	R12 T08 S30 SD 4	185.871
100-008-340-0	GOSHEN RUN FARMS LLC	OR214	1287	R12 T08 S30 SD 3	99.003
100-003-460-0	GREEN BETTY J	OR211	1160	R12 T08 S30 SD 23	8.67
100-003-430-0	HART CHARLES 1/3 & RHONDA KAY	OR58	470	R12 T08 S30 SD 20	35.364
100-010-100-0	HART CHARLES 1/3 & RHONDA KAY	OR58	470	R12 T08 S30 SD 15	11.83
100-003-470-0	HART CHARLES 1/3 & RHONDA KAY	OR58	470	R12 T08 S30 SD 21	0.76
100-008-470-0	HICKERSON CASEY A	OR191	746	R12 T08 S30 SD 14	42.958
100-008-460-4	HICKERSON CASEY A	OR205	454	R12 T08 S30 SD 30	17.952
100-009-270-0	HILL RICKY J & WENDY R	OR226	2274	R12 T08 S30 SD 6 S	61.596
100-009-300-0	HILL RICKY J & WENDY R	OR226	2274	R12 T08 S30 SD 19	1.355
100-009-290-0	HILL RICKY J & WENDY R	OR226	2274	R12 T08 S30 SD 10	1.22
100-009-280-0	HILL RICKY J & WENDY R	OR226	2274	R12 T08 S30 SD 18	0.26
100-008-461-1	MAYLE BRIAN K	OR234	3023	R12 T08 S30 SD32	2.346
100-008-460-2	MAYLE CAROL K	OR189	694	R12 T08 S30 SD 28	18.096
100-009-290-1	PIATT JAMES M & LINDA K PIATT ETAL	OR233	2116	R12 T08 S30 SD 31	31.99
100-006-660-0	PIATT JAMES M ETAL	OR233	2116	R12 T08 S30 SD 24	0.952
100-008-460-0	WILSON KENNETH D	OR195	603	R12 T08 S30 SD 2	5.767



Boundaries	
----- Hidden	--- ROW
----- Hydro	--- Section
----- Roads	--- Lot
----- County	--- Township
----- Parcel	--- Parcels



Disclaimer: The information that these maps contains is for reference purposes only. Please bring any erros to the attention of the Engineer's Office staff.
Thank you

Source: Morgan County Engineer's Office
Author: Marcia Wolfe
Date: 7/16/2020